

THE AVONDALE

FOUR BEDROOM DETACHED HOME



Individual plots and elevational treatments may vary, please speak to the sales adviser



This tasteful, double-fronted, detached home, with elegant sash-style windows, provides plenty of flexible living space. The Avondale's generous open-plan kitchen has a dedicated dining area with an attractive bay window, and a separate

utility room. A large, triple-aspect lounge leads to the garden via French doors and a separate study provides quiet space to work. Upstairs are four double bedrooms, the main with en suite, and a family bathroom with bath and shower.



DAVID WILSON HOMES

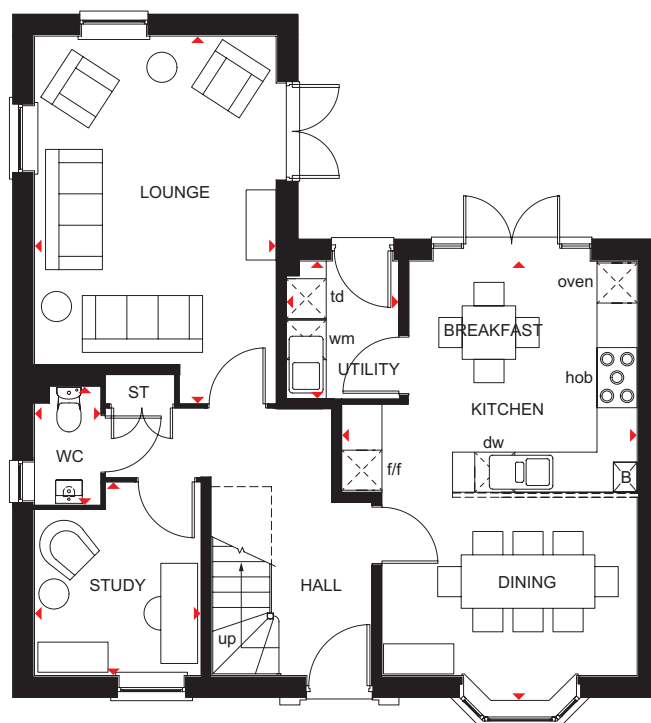
WHERE QUALITY LIVES

THE AVONDALE

FOUR BEDROOM HOME

Key

B	Boiler	BH ST	Bulkhead store	f/f	Fridge/freezer space	dw	Dishwasher space	◀▶	Dimension location
ST	Store	CYL	Cylinder	wm	Washing machine space	td	Tumble dryer space		



Ground Floor

Lounge	5490 x 3615 mm	18'0" x 11'10"
Kitchen/ Breakfast/Dining	6600 x 4418 mm	21'7" x 14'6"
Utility	2062 x 1688 mm	6'9" x 5'6"
Study	2885 x 2490 mm	9'5" x 8'2"
WC	1768 x 983 mm	5'10" x 3'3"



First Floor

Bedroom 1	5587 x 3615 mm	18'4" x 11'10"
En Suite	2222 x 1435 mm	7'3" x 4'8"
Bedroom 2	5227 x 2800 mm	17'1" x 9'2"
Bedroom 3	3566 x 3316 mm	11'8" x 10'10"
Bedroom 4	3893 x 2550 mm	12'9" x 8'4"
Bathroom	2871 x 1929 mm	9'5" x 6'4"

All images used are for illustrative purposes. These and the dimensions given are illustrative for this house type and individual plots and elevational treatments may vary, please speak to the sales adviser in respect of individual properties. We give maximum dimensions within each room which includes areas of fixtures and fittings including fitted furniture. These dimensions should not be used for carpet or flooring sizes, appliance spaces or items of furniture. All images, photographs and dimensions are not intended to be relied upon for, nor to form part of, any contract unless specifically incorporated in writing into the contract. DWH 2017 H456 --X7 DS07/SP437373

dwh.co.uk



DAVID WILSON HOMES
WHERE QUALITY LIVES